

**Candide's Garden** provides a menu of environmental solutions. The goal is to educate homeowners, youths, and organizations about how to implement environmentally beneficial gardening and landscaping practices.

## Mission Statement

The Patchwork for Wildlife program celebrates local community members making landscaping choices which help support native wildlife and pollinators, contributing to a large collective patchwork of beneficial land.

Please join us in this worthwhile endeavor!



Check Out the Town Map Online!  
at [candidesgarden.org](http://candidesgarden.org)

Reach out for advice  
or to set up a Yard  
Evaluation!

## Contact Us

**Belmar - Dianne Veilleux**  
[pfwbelmar@gmail.com](mailto:pfwbelmar@gmail.com)

**Lake Como - Jon Gibbons**  
[candidesgarden1761@gmail.com](mailto:candidesgarden1761@gmail.com)

**Point Pleasant Beach - Cindy Kells**  
[clkppb@gmail.com](mailto:clkppb@gmail.com)

**Red Bank - Mary Warner**  
[ogeeoheck@gmail.com](mailto:ogeeoheck@gmail.com)

## Resources

[candidesgarden.org](http://candidesgarden.org)

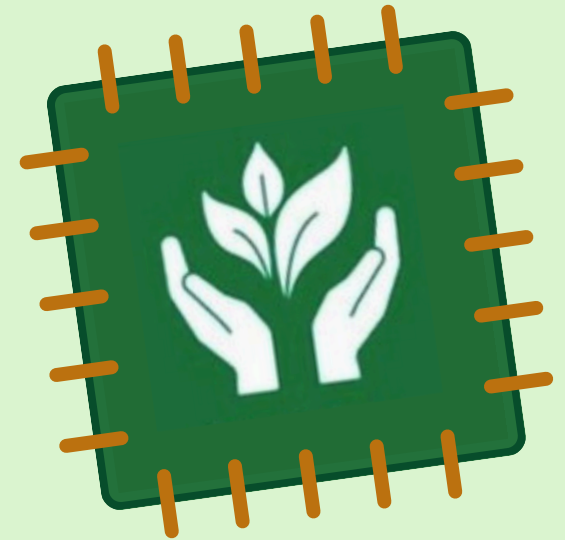
[jerseyyards.org](http://jerseyyards.org)

[npsnj.org](http://npsnj.org)

[wildflower.org](http://wildflower.org)

# Patchwork for Wildlife™ Belmar

In association with Candide's Garden



Creating a Significant Area of Eco-Beneficial  
Landscape. . . One Yard at a time!

We award Certificates of Appreciation annually to folks who make Eco-friendly changes in their yards. Below are the levels of yard recognition possible to achieve.

## Certification Levels



One or two  
qualifying  
eco-beneficial  
features.



Multiple  
qualifying  
eco-beneficial  
features.



Extensive  
qualifying  
eco-beneficial  
features.

Contact us about a free Yard Evaluation!

### **Why is the Patchwork for Wildlife Project so important?**

By working together to spread the use of sustainable yard practices, we can create a collective network of patchwork properties that support local wildlife and pollinators.

### **No yard too small!**

Yards of all sizes are encouraged to participate. We recognize folks for their commitment to improve the environmental impact of their landscapes, and even small spaces play a vital role in the community's ecosystem.

### **How do I participate in the Patchwork for Wildlife Program?**

Residents can request a yard evaluation, or nominate a neighbor or friend in town with a notable yard.

### **How will the participants be recognized?**

Participants will receive a yard sign to proudly display in their beautiful yard, and it will display the certification level of impact earned. The certificates are given out at our awards ceremony every December.

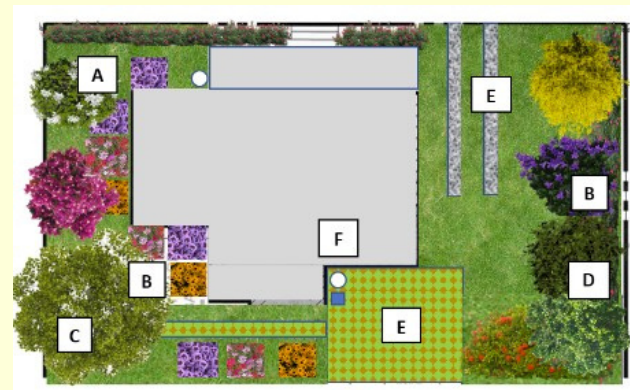
### **Can I make improvements to my yard after being awarded a certain level?**

Yes! We encourage folks to continually make changes to their yards with sustainable impacts in mind. Feel free to reach out for a re-evaluation of your yard, you could earn a higher certification level!

### **Is the Patchwork for Wildlife Project only in Belmar?**

No, the Patchwork for Wildlife Project started in Lake Como, and now has growing chapters in Belmar, Red Bank, and Point Pleasant Beach. Let your neighbors know!

## Example Yard



### **A. Reduced Lawn:**

Limiting the amount of lawn space allows more land to be given back to the wildlife.

### **B. Habitat for Wildlife/Pollinators:**

Use of Native Plants helps support wildlife/pollinators by providing nourishment and shelter.

### **C. Native Trees:**

Choosing native trees continues to support local wildlife, as well as providing ample shade when planted on South and/or West sides of a house.

### **D. Remove/Don't Plant Invasive Species:**

Non-native plants DO NOT support local wildlife and crowd out the native species that are supportive. Please keep this in mind when planting, and we are happy to provide more information about identifying invasive species.

### **E. Reduce Storm Water Runoff:**

Ground cover such as plants or gravel are able to absorb more rainfall than impervious surfaces such as concrete or asphalt. This means that minimizing these surfaces will help reduce the risks of flooding.

### **F. Practice Sustainable Maintenance:**

There are many different ways to practice Sustainable Maintenance in your yard from composting kitchen scraps, to choosing electric powered equipment over gas. We would love to teach you more about all the ways you can implement these practices at home.